

MATERIAL ABBREVIATIONS

ALUMINUM

AL = Aluminum

COPPER

CU = Copper

PLASTIC

ABS = Acrylonitrile -butadiene - styrene
AC = Polyacetal
EVA = Ethylene vinyl acetate
PA = Polyamide = Nylon
PC = Polycarbonate
PE = Polyethylene
PES = Polyester
PETP = Polyethylene terephthalate = Tetlon
PP = Polypropylene
PS = Polystyrene
PTFE = Polytetrafluoroethylene = Teflon
PUR = Polyurethane
PVC = Polyvinyl chloride

RUBBER

VN = Vinyl Nitrile
EPDM = EP rubber
NBR = Nitrile butadiene rubber
NR = Natural rubber
NP = Neoprene
SI.R = Silicone rubber
SY.R = Synthetic rubber
EPH = Epichlorohydrin

STEEL

GS = Galvanized steel
SS = Stainless steel
PS = Plated steel
PAS = Primed steel

AUXILIARY CODE

K-0

Designates the year. "K" indicates the year 2000. Years progress or regress in alphabetical order. "J" is 1999, "L" is 2001, "M" is 2002, and so on. The letters "I" and "O" were skipped.
Designates significant part changes within the same year. Base is 0 and this number advances for each change.

Example: P-1

"P" indicates 2004.

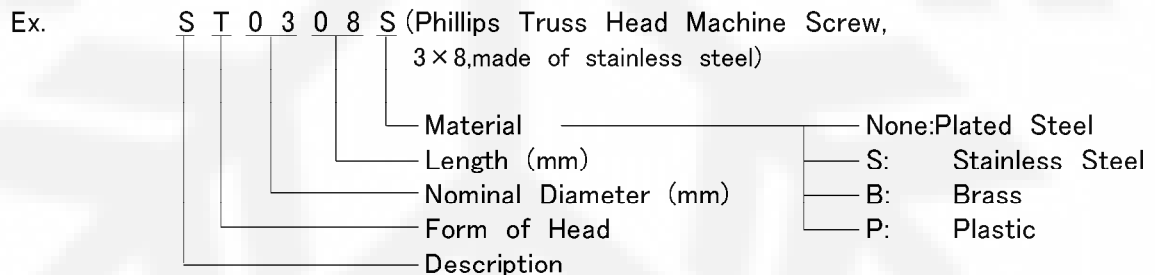
"1" indicates the first significant part change for 2004.

MARKS LOCATED UNDER THE AUXILIARY CODE

- = Part deleted.
- x = Part deleted and replaced by "o" part.
- o = New part in place of "x" part.

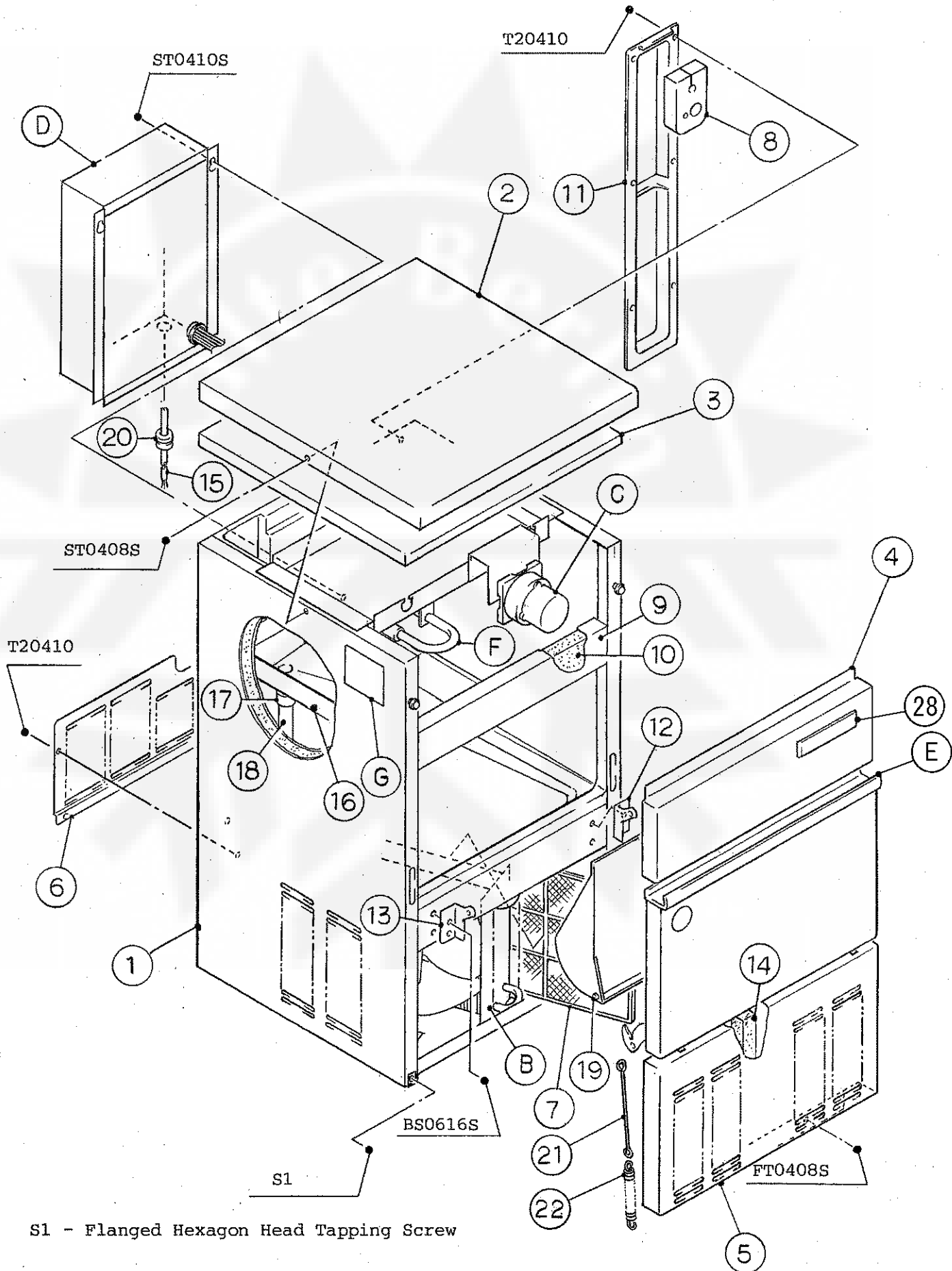
FASTENER ABBREVIATION LIST

ST	=	Phillips Truss Head Machine Screw
SP	=	Phillips Pan Head Machine Screw
SF	=	Phillips Flat Head Machine Screw
SS	=	Phillips Pan Head Machine Screw with Split Lock Washer
SW	=	Phillips Pan Head Machine Screw with Split Lock Washer and Flat Washer
T1	=	Phillips Truss Head Tapping Screw (Correspond to Type A)
T2	=	Phillips Truss Head Tapping Screw (Correspond to Type B)
T3	=	Phillips Truss Head Tapping Screw (Correspond to Type C)
FT	=	Phillips Truss Head Tapping Screw (Special)
BH	=	Hexagon Head Bolt
BC	=	Socket Head Cap Screw
BS	=	Hexagon Bolt with Split Washer
BW	=	Hexagon Bolt with Split Washer and Flat Washer
BF	=	Hexagon Flange Bolt
BR	=	Cross-Recessed Hexagon Head Bolt
BRW	=	Cross-Recessed Hexagon Head Bolt with Split Lock Washer and Flat Washer
WL	=	Split Lock Washer
WT	=	External Tooth Washer
WF	=	Flat Washer
WS	=	Spring Washer
NH	=	Hexagon Nut
NF	=	Hexagon Flange Nut
NC	=	Hexagon Cap Nut
NS	=	Square Nut
NW	=	Wing Nut

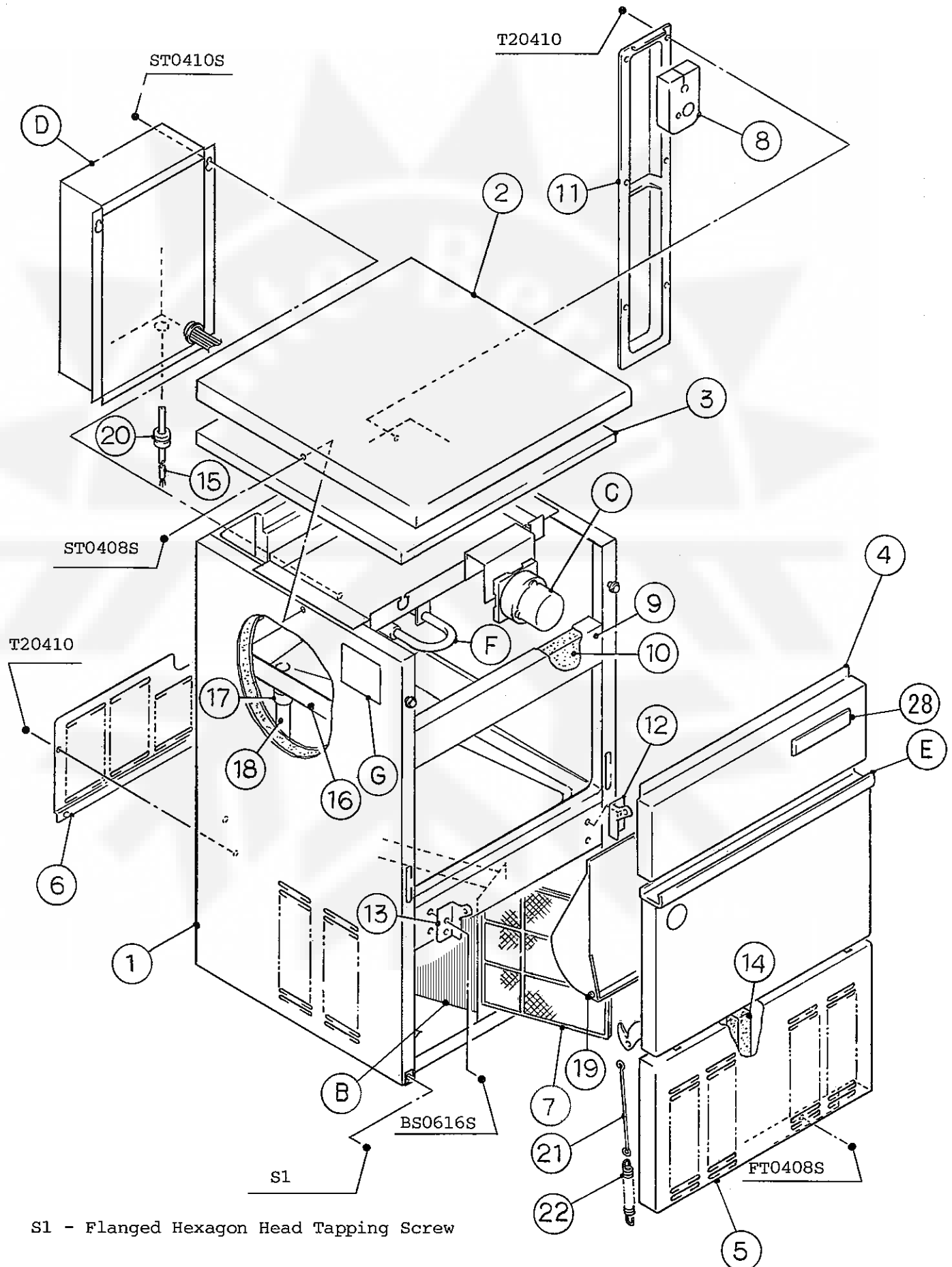


(Note) Second character is numerical except the list.
 Ex: S1,S2,B3 etc.

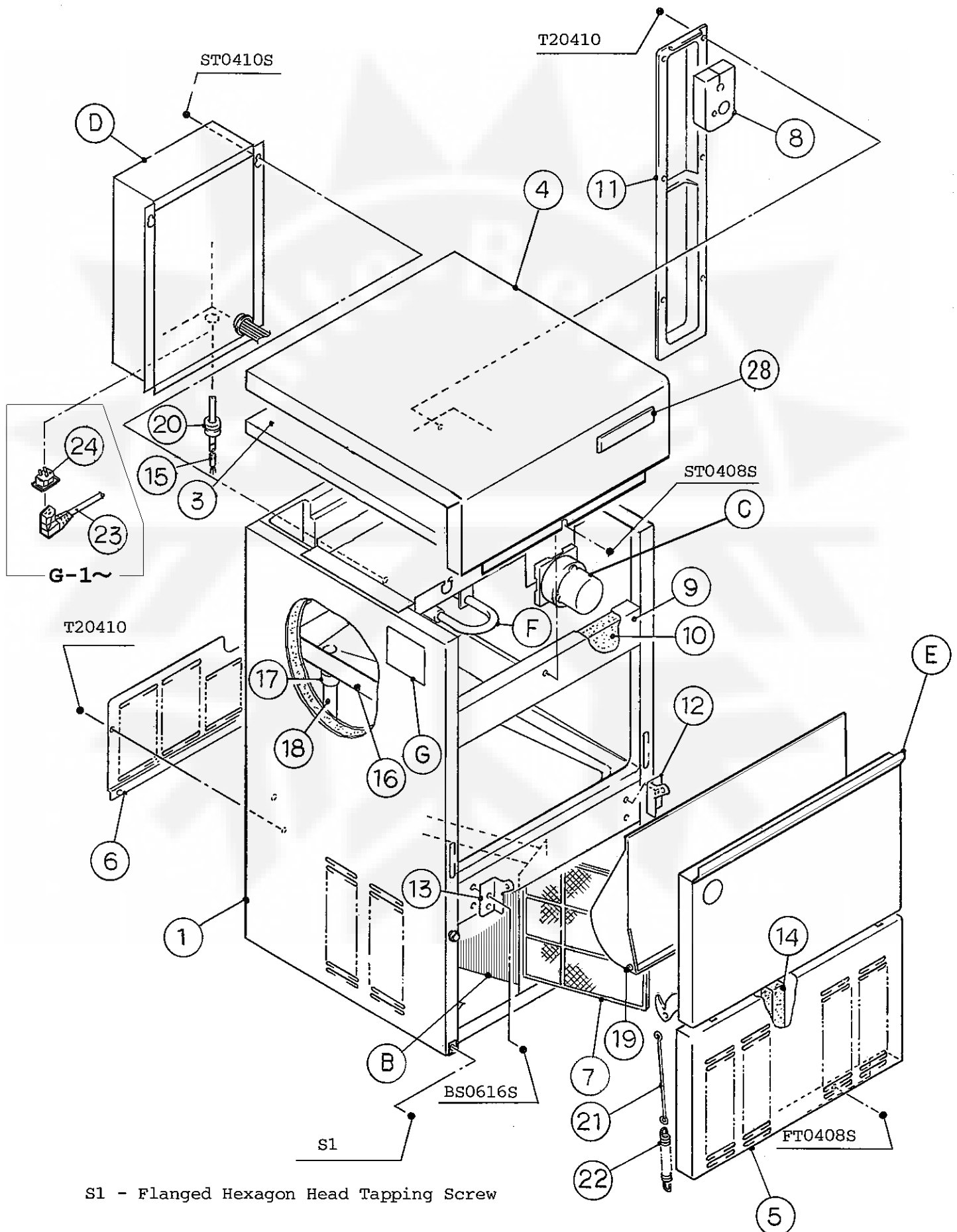
And abbreviations and names are shown under the illustration.



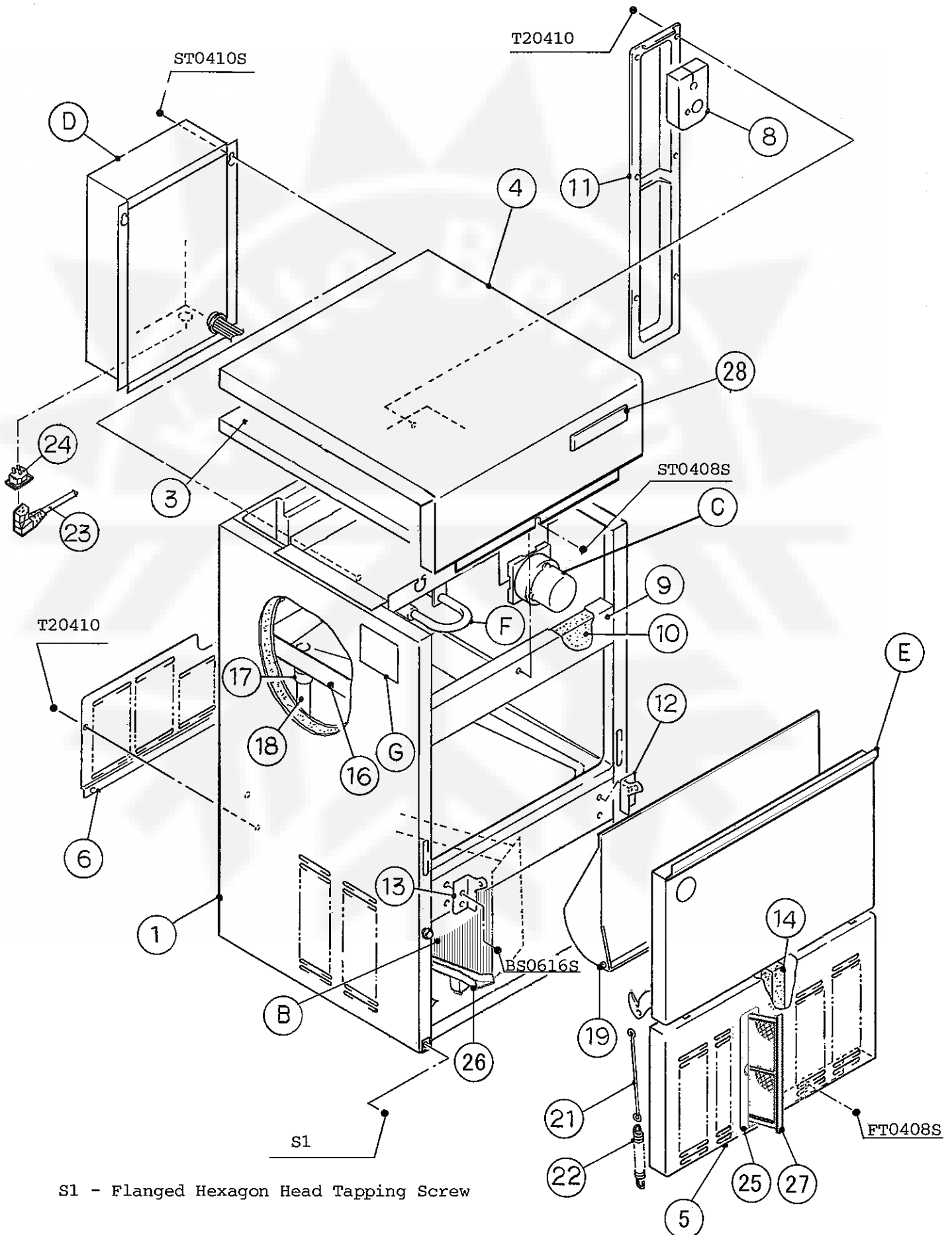
S1 - Flanged Hexagon Head Tapping Screw



S1 - Flanged Hexagon Head Tapping Screw



S1 - Flanged Hexagon Head Tapping Screw



S1 - Flanged Hexagon Head Tapping Screw

HE, GENERAL, AUSTRALIA, OCEANIA, HSP

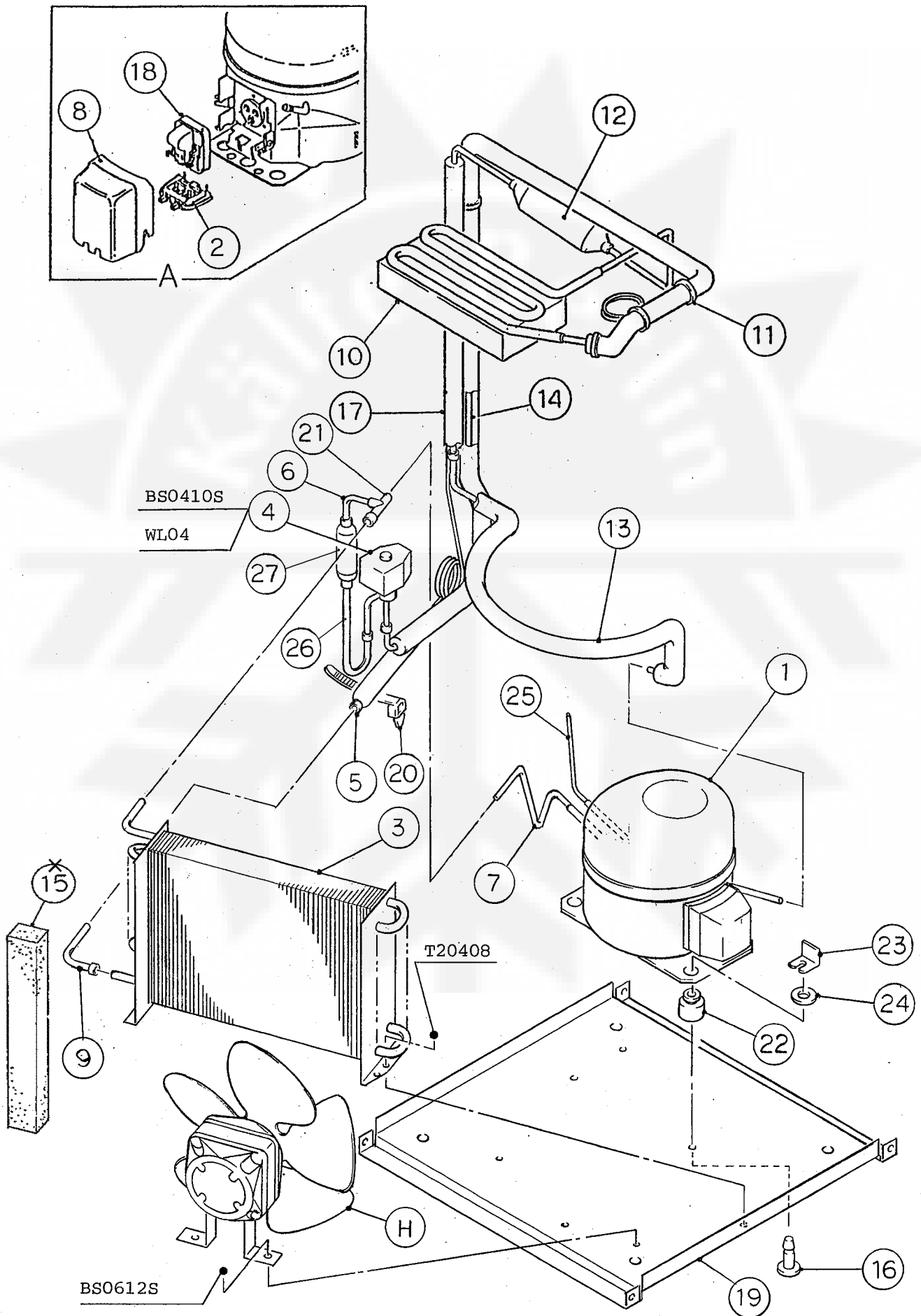
MODEL : IM-21CLE				TITLE : A. ICE CUBER ASSY			
INDEX NO.	DESCRIPTION	MATERIAL OR MODEL NUMBER	PART NUMBER	REQ'D NUMBER			
				J-1 K-0	K-1	K-2,A-05 A-1,B-0 C-0,	C-1 D-0
B	REFRIGERATION ASSY	-	1H2034A01	1	1	—	
		-	1H2147A01			1	—
		-	1H2820A01				1
C	ICEMAKING MECHANISM ASSY	-	1H0272A12	1	1	1	1
D	CONTROL BOX ASSY	-	2H3977A02	1	1	1	1
		-	2H3977A03				
		-	2H6749A01				
		-	2H6749A02				
E	DOOR ASSY	-	3X7332A01	1	1	1	1
F	WATER CIRCUIT ASSY	-	3H9599A03	1	1	1	1
G	LABEL LOCATION	-	3X2571A01	1	1	1	1
		-	3X2571A02				
1	UNIT FRAME	S.S, G.S	1H2045G01	1	1	1	—
		S.S, G.S	1H2045G02				1
		S.S, G.S	1H2045G03				
2	TOP PANEL	S.S	3H9606-01	1	1	1	1
3	INSULATION - TOP PANEL	PE	2H0655-01	1	1	1	1
4	FRONT PANEL (UPPER)	S.S	3H8109G01	1	1	1	1
		S.S	3X7334G01				
5	FRONT PANEL (LOWER)	S.S	3X3184-01	1	1	1	—
		S.S	3X7278-01				1
		S.S	3X7328-01				
6	REAR PANEL	G.S	4X7301-01	1	1	1	1
7	AIR FILTER	PE	208284G01	1	1	1	1
8	INSULATION	PE	4X5295-02	1	1	1	1
9	FRONT FRAME	S.S	3H1678-10	1	1	1	1
10	INSULATION - FRONT FRAME	PE	4H2317-01	1	1	1	1
11	PIPE COVER	G.S	3H0172-02	1	1	1	1
12	HINGE (RIGHT)	S.S	4H2583-01	1	1	1	1
13	HINGE (LEFT)	S.S	4H2584-01	1	1	1	1
14	SEAL (A)	PE	4H4359-04	1	1	1	—
		PE	4Y0913-01				1

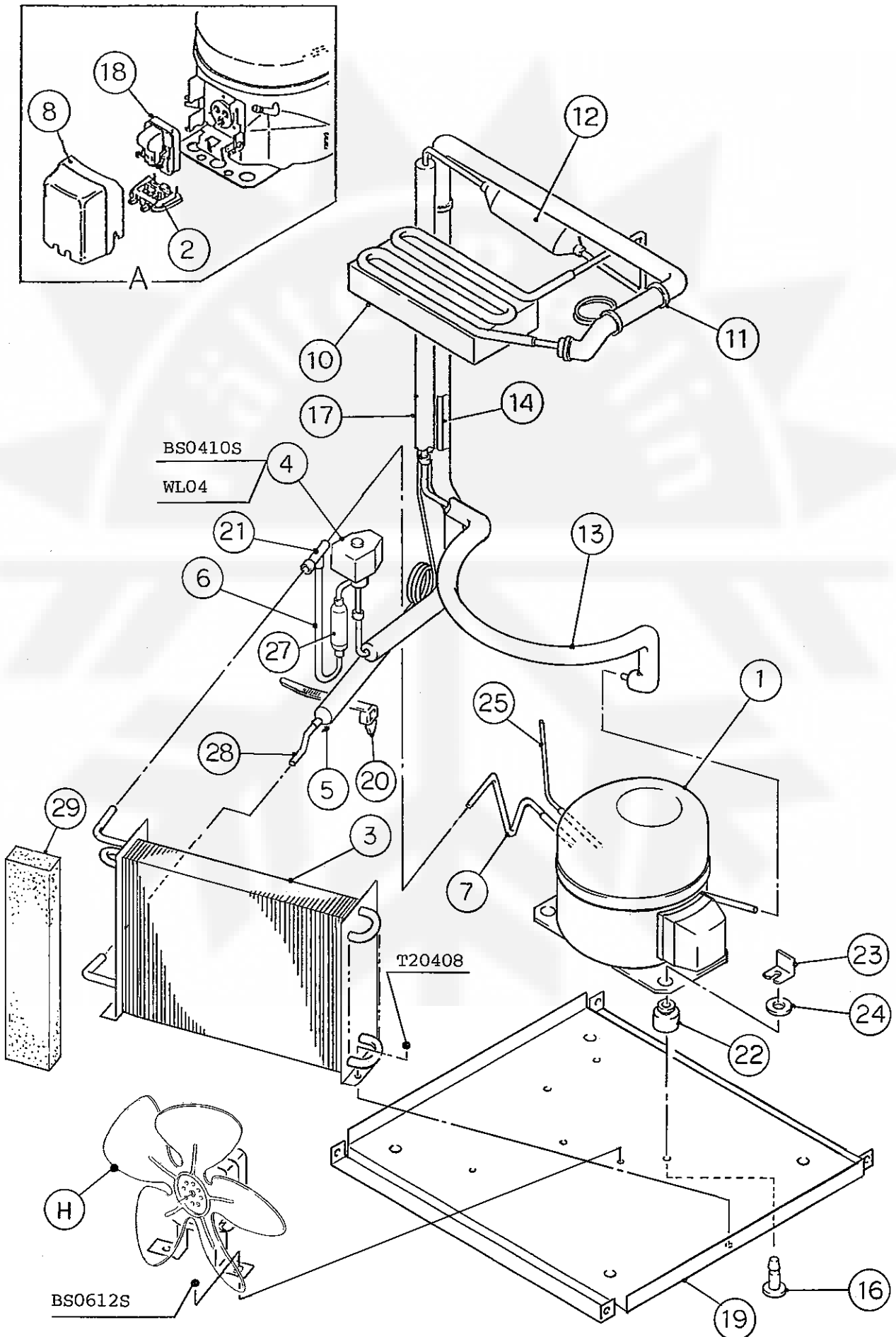
HE, GENERAL, AUSTRALIA, OCEANIA, HSP

MODEL : IM-21CLE		TITLE : A. ICE CUBER ASSY					
INDEX NO.	DESCRIPTION	MATERIAL OR MODEL NUMBER	PART NUMBER	REQ'D NUMBER			
				D-1	D-2 E-0	E-1 F-0 G-0	G-1
B	REFRIGERATION ASSY	-	-				
		-	-				
		-	1H2820A01	1	1	1	1
C	ICEMAKING MECHANISM ASSY	-	1H0272A12	1	1	1	1
D	CONTROL BOX ASSY	-	2H3977A02	1	-		
		-	2H3977A03		1	-	
		-	2H6749A01			1	-
		-	2H6749A02				1
E	DOOR ASSY	-	3X7332A01	1	1	1	1
F	WATER CIRCUIT ASSY	-	3H9599A03	1	1	1	1
G	LABEL LOCATION	-	3X2571A01	1	1	-	
		-	3X2571A02			1	1
1	UNIT FRAME	-	-				
		S.S, G.S	1H2045G02	-			
		S.S, G.S	1H2045G03	1	1	1	1
2	TOP PANEL	S.S	3H9606-01	x			
3	INSULATION - TOP PANEL	PE	2H0655-01	1	1	1	1
4	FRONT PANEL (UPPER)	S.S	3H8109G01	-			
		S.S	3X7334G01	1	1	1	1
5	FRONT PANEL (LOWER)	-	-				
		S.S	3X7278-01	-			
		S.S	3X7328-01	1	1	1	1
6	REAR PANEL	G.S	4X7301-01	1	1	1	1
7	AIR FILTER	PE	208284G01	1	1	1	1
8	INSULATION	PE	4X5295-02	1	1	1	1
9	FRONT FRAME	S.S	3H1678-10	1	1	1	1
10	INSULATION - FRONT FRAME	PE	4H2317-01	1	1	1	1
11	PIPE COVER	G.S	3H0172-02	1	1	1	1
12	HINGE (RIGHT)	S.S	4H2583-01	1	1	1	1
13	HINGE (LEFT)	S.S	4H2584-01	1	1	1	1
14	SEAL (A)	-	-				
		PE	4Y0913-01	1	1	1	1

HE, GENERAL, AUSTRALIA, OCEANIA, HSP, GRAM, CHINA

MODEL : IM-21CLE		TITLE : A. ICE CUBER ASSY					
INDEX NO.	DESCRIPTION	MATERIAL OR MODEL NUMBER	PART NUMBER	REQ'D NUMBER			
				H-1	H-2,U-0 V-0,A-01 L-0		
B	REFRIGERATION ASSY	(HE,GENERAL, AUSTRALIA, OCEANIA,HSP)	1H2820A01	1	—		
			1H2820A02		1		
		(GRAM)	1H2820001		1		
		(CHINA)	1H2820002		1		
C	ICEMAKING MECHANISM ASSY	-	1H0272A12	1	1		
D	CONTROL BOX ASSY	-	2H6749A01	—			
		-	2H6749A02	1	1		
E	DOOR ASSY	(HE,GENERAL, AUSTRALIA, OCEANIA,HSP, CHINA)	3X7332A01	—			
			3Y2892A01	1	1		
		(GRAM)	3Y2892001		1		
F	WATER CIRCUIT ASSY	-	3H9599A03	1	1		
			3H9599001		1		
G	LABEL LOCATION	(HE,GENERAL, AUSTRALIA, OCEANIA,HSP)	3X2571A01				
			3X2571A02	1	1		
		(GRAM)	3X2571001		1		
		(CHINA)	3X2571009		1		
1	UNIT FRAME	S.S, G.S	1H2045G02				
		S.S, G.S	1H2045G03	1	1		
2	TOP PANEL	S.S	3H9606-01				
3	INSULATION - TOP PANEL	PE	2H0655-01	1	1		
4	FRONT PANEL (UPPER)	(HE,GENERAL, AUSTRALIA, OCEANIA,HSP, CHINA)	3H8109G01				
			3X7334G01	1	1		
		(GRAM)	3X7334G04		1		
5	FRONT PANEL (LOWER)	S.S	3X7328-01	1	—		
		S.S	3Y3673G01		1		
6	REAR PANEL	G.S	4X7301-01	1	1		
7	AIR FILTER	PE	208284G01	1	x		
8	INSULATION	PE	4X5295-02	1	1		
9	FRONT FRAME	S.S	3H1678-10	1	1		
10	INSULATION - FRONT FRAME	PE	4H2317-01	1	1		
11	PIPE COVER	G.S	3H0172-02	1	1		
12	HINGE (RIGHT)	S.S	4H2583-01	1	1		





HE, GENERAL, AUSTRALIA, OCEANIA, HSP

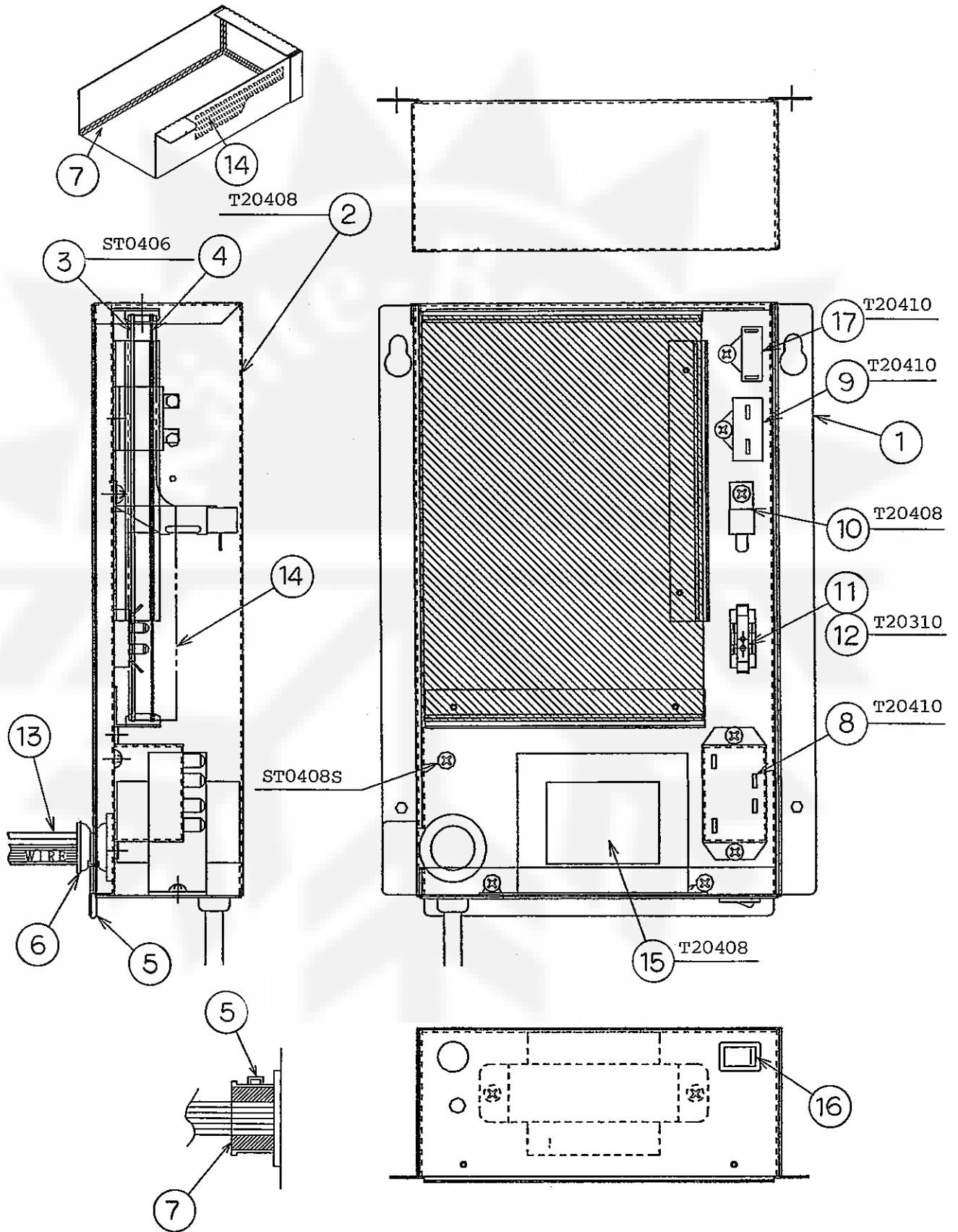
MODEL : IM-21CLE				TITLE : B. REFRIGERATION ASSY			
INDEX NO.	DESCRIPTION	MATERIAL OR MODEL NUMBER	PART NUMBER	REQ'D NUMBER			
				J-1 K-0	K-1	K-2,A-05 A-1,B-0 C-0,	C-1 D-0
H	FAN MOTOR ASSY	(S-9081)	3X3218A01	1	1	—	
		(S-9101)	3X1507A01			1	1
1	COMPRESSOR	TLS6F	450900-01	1	1	1	1
2	CORD RELIEF	103N1006	450899-01	1	1	1	1
3	CONDENSER - AIR COOLED	-	3X3188-01	1	1	—	
		-	2H4480-01			1	—
		-	2H5942-01				1
4	HOT GAS SOLENOID VALVE	AMS-24B10HD-1	418866-02	1	1	1	1
5	DRIER	DY-12QHD-2	445655-04	1	1	1	1
6	COPPER TUBE (A) - HOT GAS	COPPER	4X6701-01	1	1	1	—
		COPPER	4Y0911-01				1
7	COPPER TUBE (H)	COPPER	3X3189-01	1	1	—	
		COPPER	3X2596-01			1	—
		COPPER	3X7275-01				1
8	COVER	103N2010	450896-01	1	1	1	1
9	JOINT / DRIER	COPPER	4X7306-01	1	1	×	
10	EVAPORATOR	-	3H9020G02	1	1	1	1
11	TIE	CV-100	7920-0002	REQ'D	REQ'D	REQ'D	REQ'D
12	HEAT EXCHANGER	COPPER	4X3926G01	1	1	1	1
13	COPPER TUBE (L)	COPPER	3X3191G01	1	1	1	—
		COPPER	3X3191G02				1
14	COPPER TUBE (B) - HOT GAS	COPPER	3X3192G01	1	1	—	
		COPPER	3X2595G01			1	—
		COPPER	3X2595G02				1
15	SEAL (A)	PE	4H4359-05	1	1	1×	
16	STEEL PIN	-	452255-01	2	2	2	2
17	INSULATION TUBE (A)	12 ID x 24 OD, L=420	3X2605-04	1	1	1	1
18	PTC STARTING DEVICE	103N0011	450901-01	1	1	1	1
19	BASE	G.S	3X2567-01	1	1	1	—
		G.S	3X7277-01				1
20	TIE	RT30SSF5	457167-01	1	1	1	1
21	TEE	COPPER	420041-03	1	1	1	1
22	RUBBER GROMMET	-	450897-01	4	4	4	4

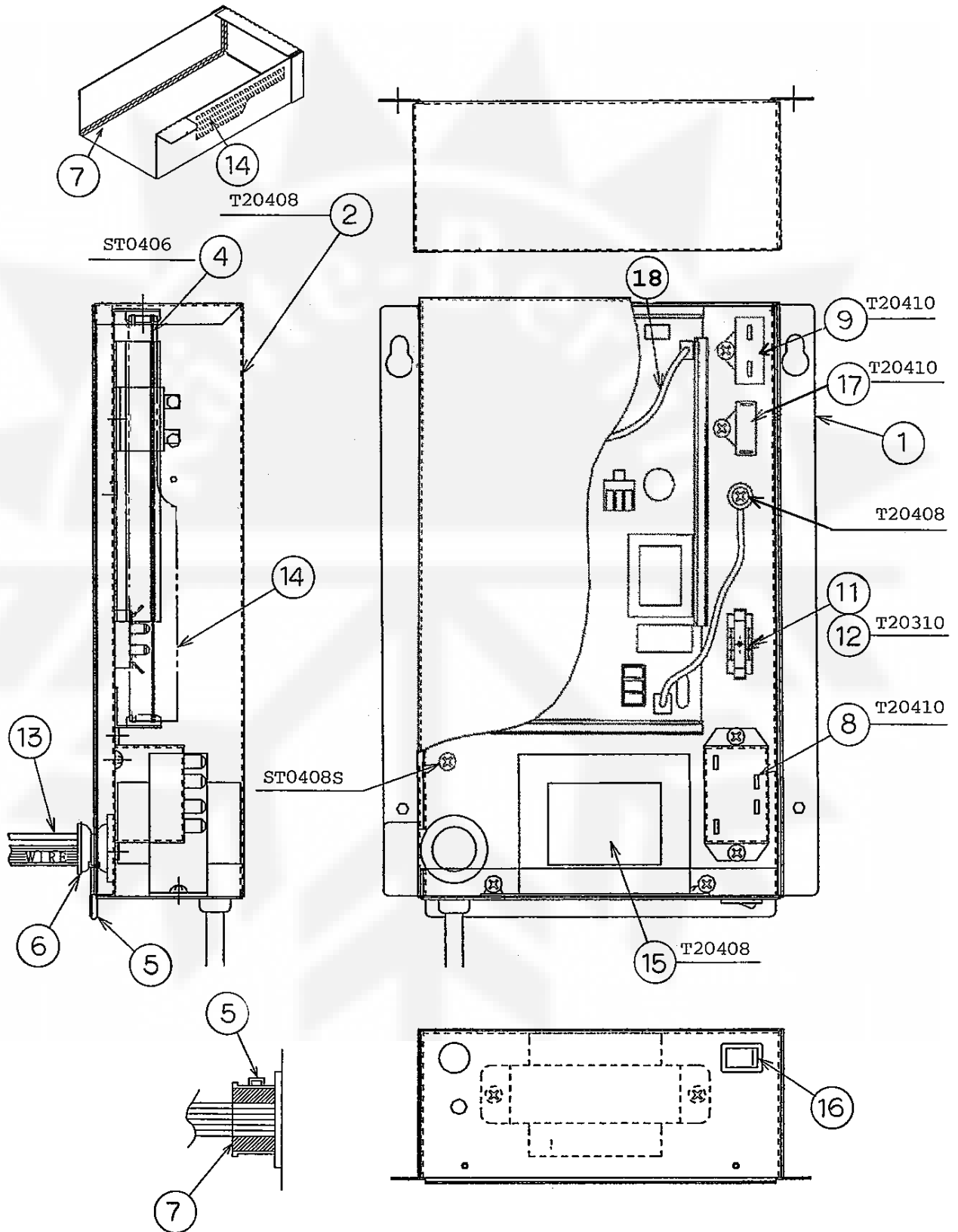
HE, GENERAL, AUSTRALIA, OCEANIA, HSP

MODEL : IM-21CLE				TITLE : B. REFRIGERATION ASSY			
INDEX NO.	DESCRIPTION	MATERIAL OR MODEL NUMBER	PART NUMBER	REQ'D NUMBER			
				D-1	D-2 E-0	E-1 F-0 G-0	G-1
H	FAN MOTOR ASSY	- (S-9101)	- 3X1507A01				
1	COMPRESSOR	TLS6F	450900-01	1	1	1	1
2	CORD RELIEF	103N1006	450899-01	1	1	1	1
3	CONDENSER - AIR COOLED	-	2H5942-01	1	1	1	1
4	HOT GAS SOLENOID VALVE	AMS-24B10HD-1	418866-02	1	1	1	1
5	DRIER	DY-12QHD-2	445655-04	1	1	1	1
6	COPPER TUBE (A) - HOT GAS	- COPPER	- 4Y0911-01				
7	COPPER TUBE (H)	COPPER	3X7275-01	1	1	1	1
8	COVER	103N2010	450896-01	1	1	1	1
9	-	-	-				
10	EVAPORATOR	-	3H9020G02	1	1	1	1
11	TIE	CV-100	7920-0002	REQ'D	REQ'D	REQ'D	REQ'D
12	HEAT EXCHANGER	COPPER	4X3926G01	1	1	1	1
13	COPPER TUBE (L)	COPPER	3X3191G02	1	1	1	1
14	COPPER TUBE (B) - HOT GAS	COPPER	3X2595G02	1	1	1	1
15	-	-	-				
16	STEEL PIN	-	452255-01	2	2	2	2
17	INSULATION TUBE (A)	12 ID x 24 OD, L=420	3X2605-04	1	1	1	1
18	PTC STARTING DEVICE	103N0011	450901-01	1	1	1	1
19	BASE	G.S	3X7277-01	1	1	1	1
20	TIE	RT30SSF5	457167-01	1	1	1	1
21	TEE	COPPER	420041-03	1	1	1	1
22	RUBBER GROMMET	-	450897-01	4	4	4	4
23	CLIP	-	452256-01	2	2	2	2
24	WASHER	-	450894-01	2	2	2	2
25	PROCESS TUBE (B)	COPPER	4X3379-01	1	1	1	1
26	-	-	-				
27	STRAINER	COPPER	451772-01	1	1	1	1
28	COPPER TUBE	COPPER	4Y0912-01	1	1	1	1
29	SEAL(B)	PE	4Y0914-01	1	1	1	1

HE, GENERAL, AUSTRALIA, OCEANIA, HSP,GRAM,CHINA

MODEL : IM-21CLE				TITLE : B. REFRIGERATION ASSY			
INDEX NO.	DESCRIPTION	MATERIAL OR MODEL NUMBER	PART NUMBER	REQ'D NUMBER			
				H-1	H-2,U-0 V-0,A-01 L-0		
H	FAN MOTOR ASSY	(S-9101)	3X1507A01	1	1		
1	COMPRESSOR	TLS6F	450900-01	1	1		
2	CORD RELIEF	103N1006	450899-01	1	1		
3	CONDENSER - AIR COOLED	-	2H5942-01	1	1		
4	HOT GAS SOLENOID VALVE	AMS-24B10HD-1	418866-02	1	1		
5	DRIER	DY-12QHD-2	445655-04	1	1		
6	COPPER TUBE (A) - HOT GAS	COPPER	4Y0911-01	1	1		
7	COPPER TUBE (H)	COPPER	3X7275-01	1	1		
8	COVER	103N2010	450896-01	1	1		
9	-	-	-				
10	EVAPORATOR	-	3H9020G02	1	1		
11	TIE	CV-100	7920-0002	REQ'D	REQ'D		
12	HEAT EXCHANGER	(HE,GENERAL, AUSTRALIA, OCEANIA,HSP, CHINA)	4X3926G01	1	1		
			4Y6122G01		1		
13	COPPER TUBE (L)	COPPER	3X3191G02	1	1		
14	COPPER TUBE (B) - HOT GAS	COPPER	3X2595G02	1	1		
15	-	-	-				
16	STEEL PIN	-	452255-01	2	2		
17	INSULATION TUBE (A)	12 ID x 24 OD, L=420	3X2605-04	1	1		
18	PTC STARTING DEVICE	103N0011	450901-01	1	1		
19	BASE	G.S	3X7277-01	1	-		
		G.S	3Y3672G01		1		
20	TIE	RT30SSF5	457167-01	1	1		
21	TEE	COPPER	420041-03	1	1		
22	RUBBER GROMMET	-	450897-01	4	4		
23	CLIP	-	452256-01	2	2		
24	WASHER	-	450894-01	2	2		
25	PROCESS TUBE (B)	COPPER	4X3379-01	1	1		
26	-	-	-				
27	STRAINER	COPPER	451772-01	1	1		
28	COPPER TUBE	COPPER	4Y0912-01	1	1		
29	SEAL(B)	PE	4Y0914-01	1	1		



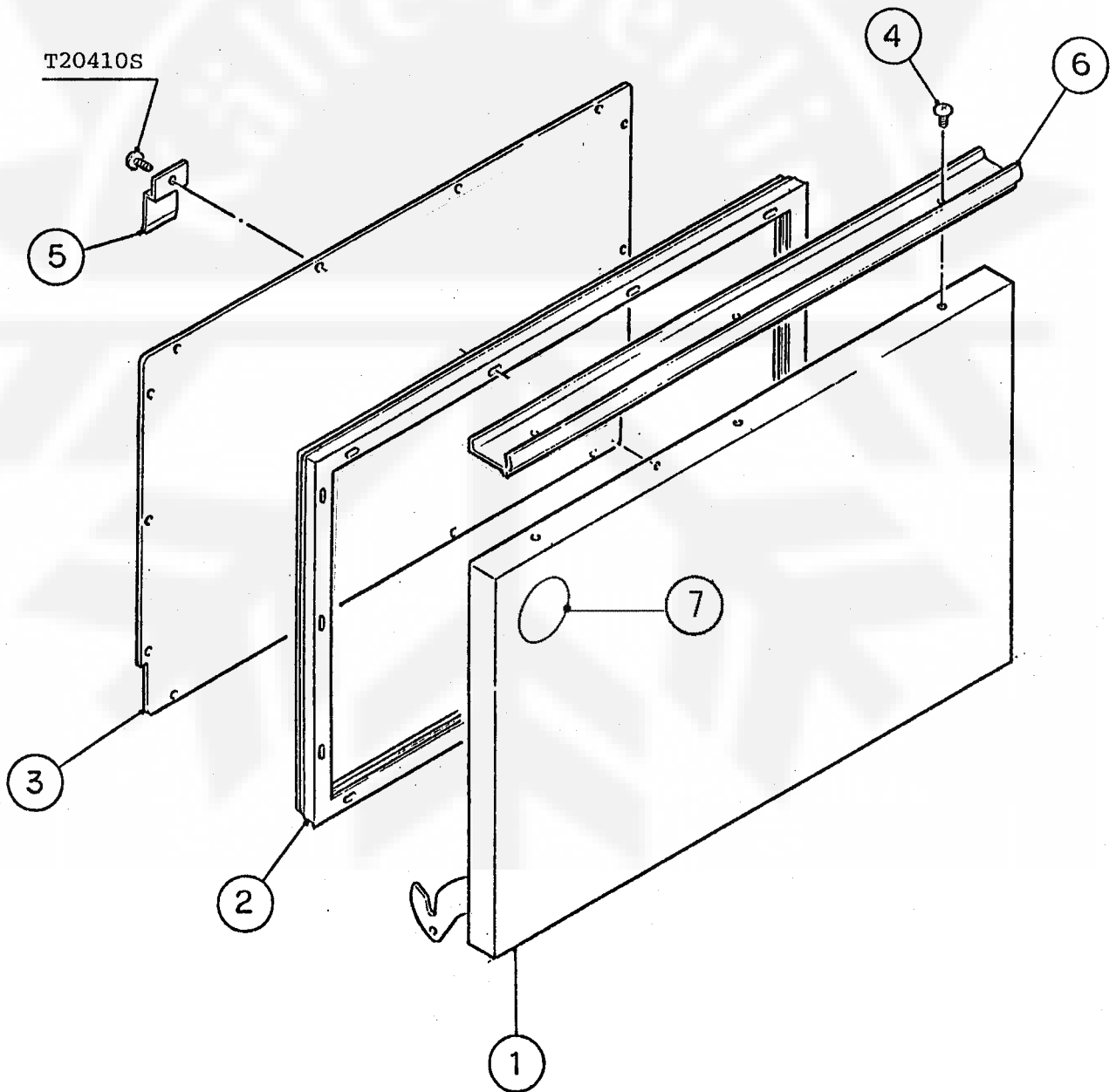


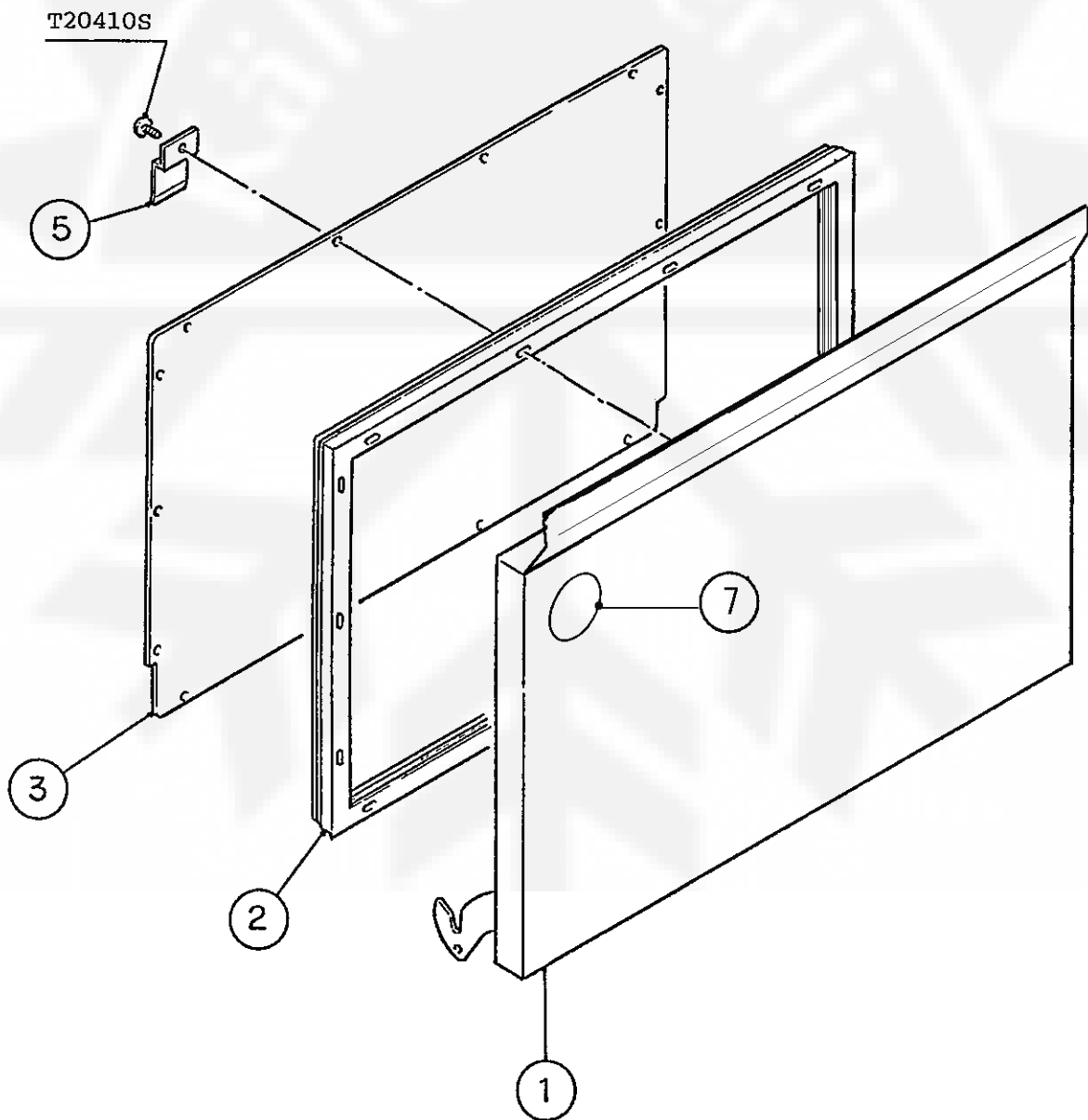
HE, GENERAL, AUSTRALIA, OCEANIA, HSP

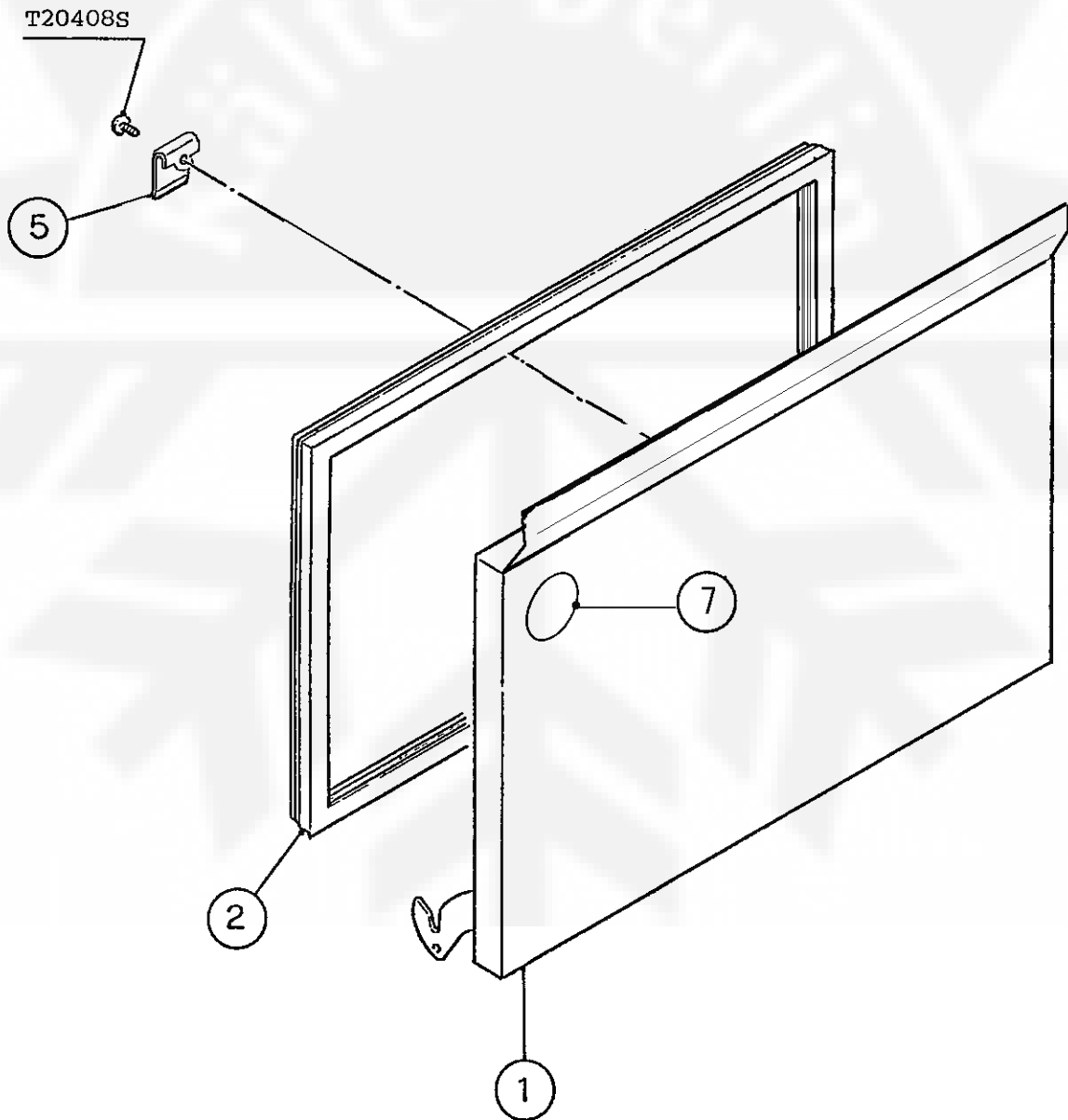
MODEL : IM-21CLE				TITLE : D. CONTROL BOX ASSY			
INDEX NO.	DESCRIPTION	MATERIAL OR MODEL NUMBER	PART NUMBER	REQ'D NUMBER			
				J-1 K-0	K-1	K-2,A-05 A-1,B-0 C-0,	C-1 D-0
1	CONTROL BOX	G.S	3X2636G01	1	1	1	1
		G.S	3X2636G02				
		G.S	3X2636G03				
2	CONTROL BOX COVER	G.S	3X2578-01	1	1	1	1
3	SHIELD PLATE	G.S	4H2594-01	1	1	1	1
4	CONTROLLER BOARD	H2AA136C10	436572-10	1	1	1	1
		H2AE024C18	462975-18				
5	NYLON TIE	PRT1.5S	427466-01	1	1	1	1
6	GROMMET	NBR	4H2568-01	1	1	1	1
7	SEAL TAPE	w8 x t3.2	2H3977-13	1	1	1	1
		w8 x t3.2	2H6749-08				
8	POWER RELAY	G7L-1A-TUB	449000-01	1	1	1	1
9	CAPACITOR - ACTUATOR MOTOR	UJ25B804UXF	456262-01	1	1	1	1
10	SURGE ABSORBER	-	436573-02	1	1	1	1
11	FUSE	5A	451924-01	1	1	1	1
12	FUSE HOLDER	445710	451925-01	1	1	1	1
		CFH15	4Y2547-01				
13	THERMISTOR	NBFC-36-AH1-1	462976-01	1	1	1	1
14	CUSHION	PE	4H2718-01	1	1	1	1
15	TRANSFORMER	230V/100V	450104-01	1	1	1	1
16	ROCKER SWITCH	H8600VB	460681-01	1	1	1	1
17	CAPACITOR - PUMP MOTOR	UJ20B105UWF	457885-01	1	1	1	1

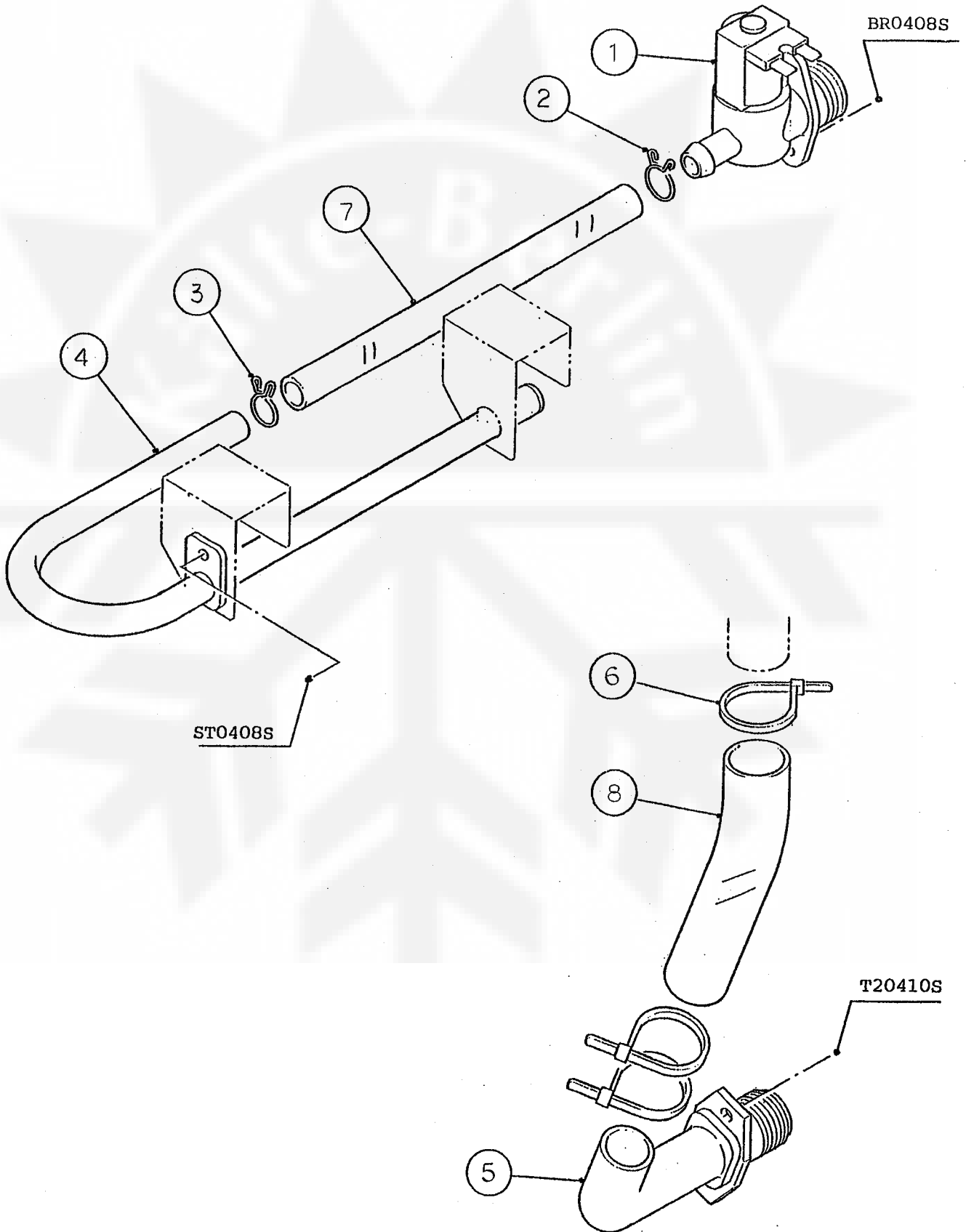
HE, GENERAL, AUSTRALIA, OCEANIA, HSP

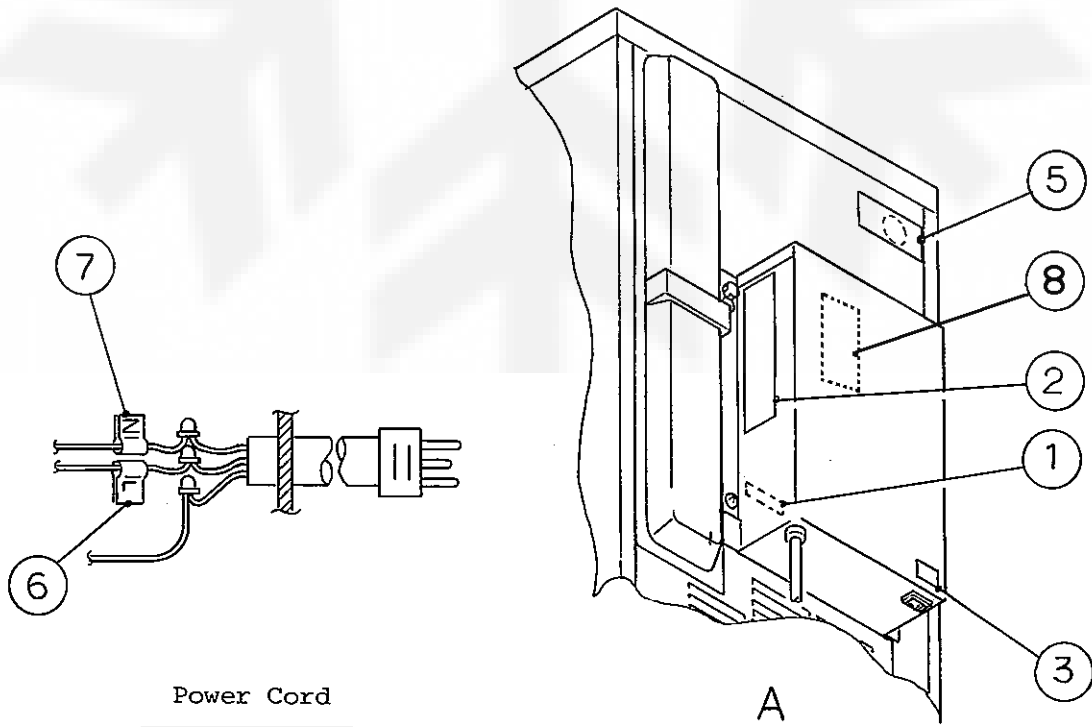
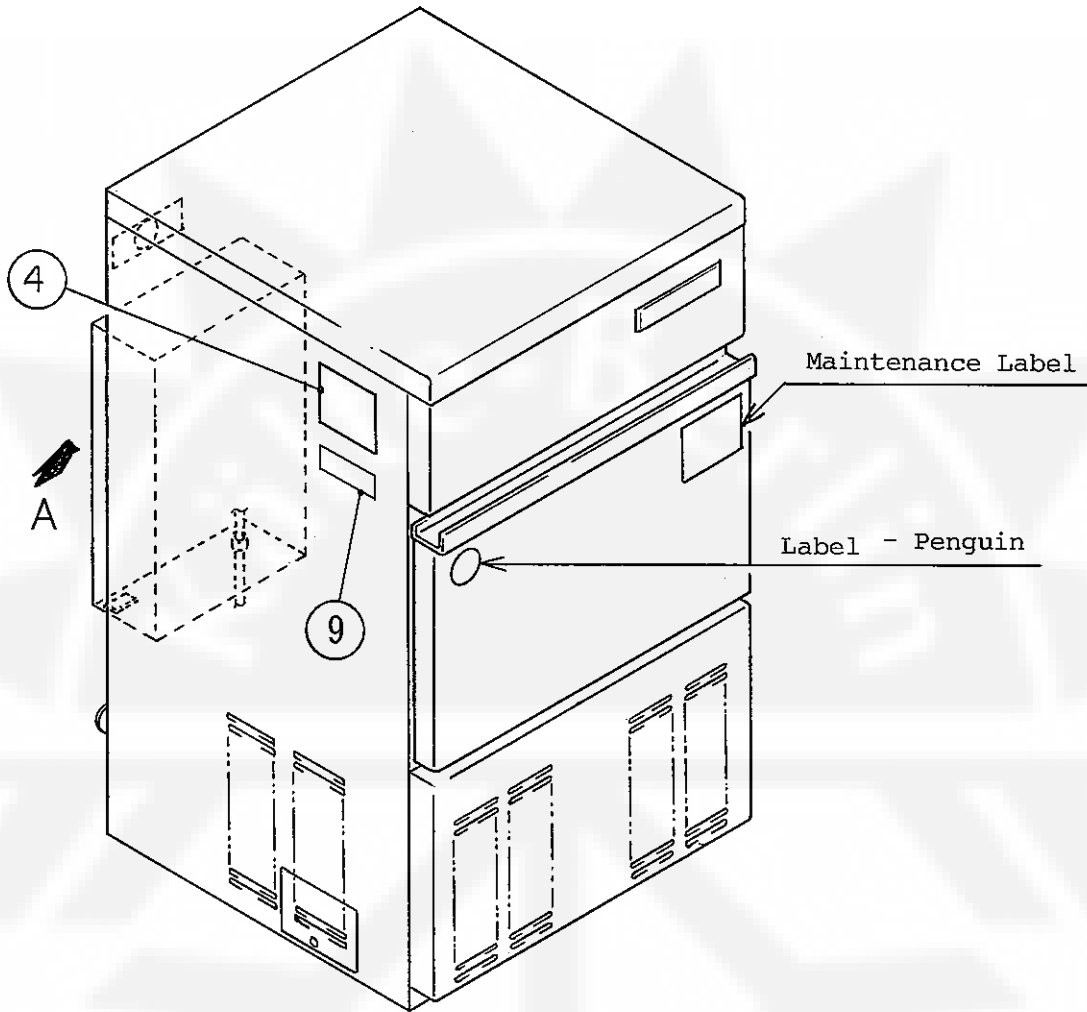
MODEL : IM-21CLE				TITLE : D. CONTROL BOX ASSY			
INDEX NO.	DESCRIPTION	MATERIAL OR MODEL NUMBER	PART NUMBER	REQ'D NUMBER			
				D-1	D-2 E-0	E-1 F-0 G-0	G-1
1	CONTROL BOX	G.S	3X2636G01	1	—		
		G.S	3X2636G02		1	1	—
		G.S	3X2636G03				1
2	CONTROL BOX COVER	G.S	3X2578-01	1	1	1	1
3	SHIELD PLATE	G.S	4H2594-01	1	1	x	
4	CONTROLLER BOARD	H2AA136C10	436572-10	1	1	—	
		H2AE024C18	462975-18			1	1
5	NYLON TIE	PRT1.5S	427466-01	1	1	1	1
6	GROMMET	NBR	4H2568-01	1	1	1	1
7	SEAL TAPE	w8 x t3.2	2H3977-13	1	1	—	
		w8 x t3.2	2H6749-08			1	1
8	POWER RELAY	G7L-1A-TUB	449000-01	1	1	1	1
9	CAPACITOR - ACTUATOR MOTOR	UJ25B804UXF	456262-01	1	1	1	1
10	SURGE ABSORBER	-	436573-02	1	1	x	
11	FUSE	5A	451924-01	1	1	1	1
12	FUSE HOLDER	445710	451925-01	1	—		
		CFH15	4Y2547-01		1	1	1
13	THERMISTOR	NBFC-36-AH1-1	462976-01	1	1	1	1
14	CUSHION	PE	4H2718-01	1	1	1	1
15	TRANSFORMER	230V/100V	450104-01	1	1	1	1
16	ROCKER SWITCH	H8600VB	460681-01	1	1	1	1
17	CAPACITOR - PUMP MOTOR	UJ20B105UWF	457885-01	1	1	1	1
18	THERMISTOR-AMBIENT TEMP	182-103-86742	462977-02			1	1

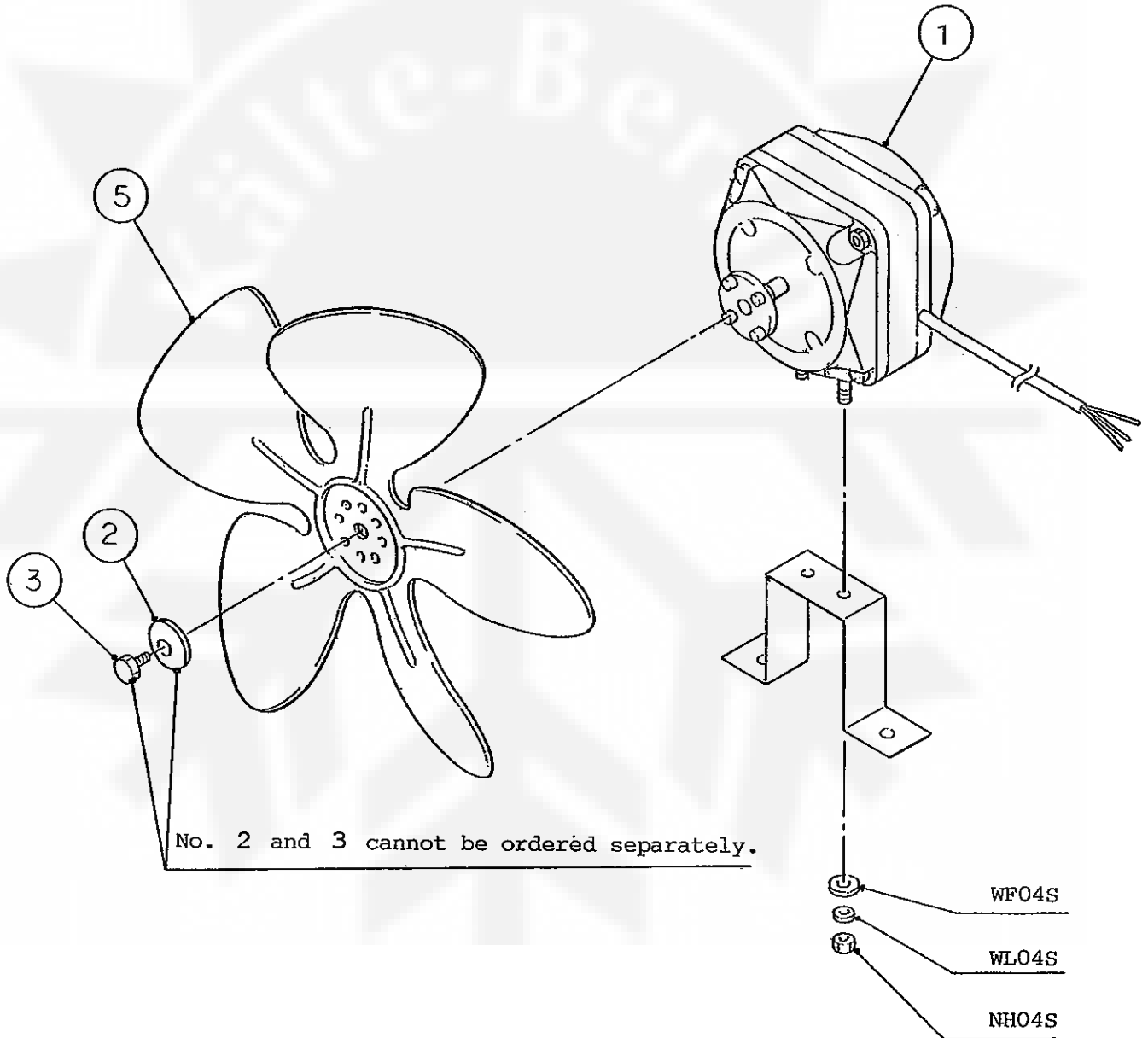


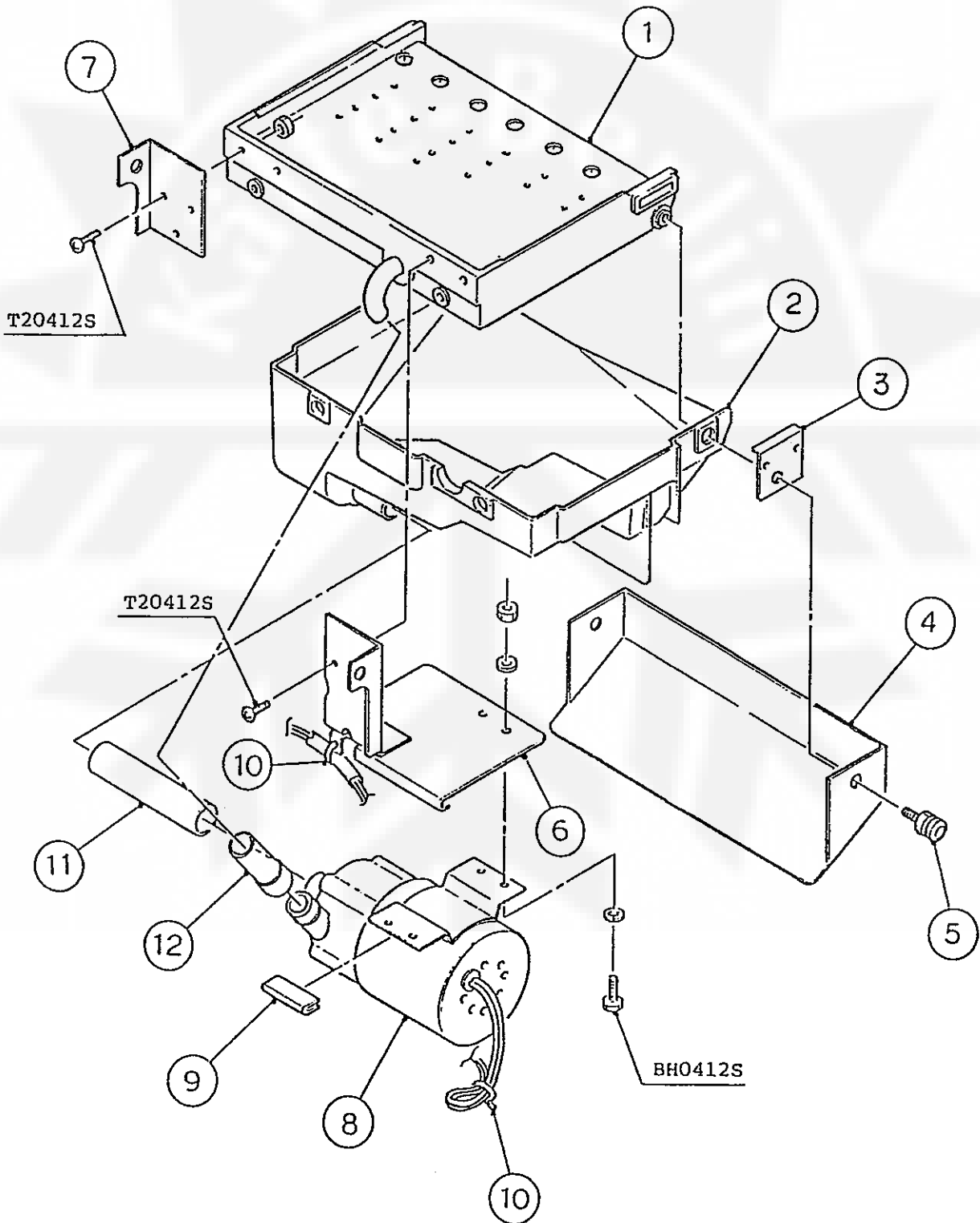


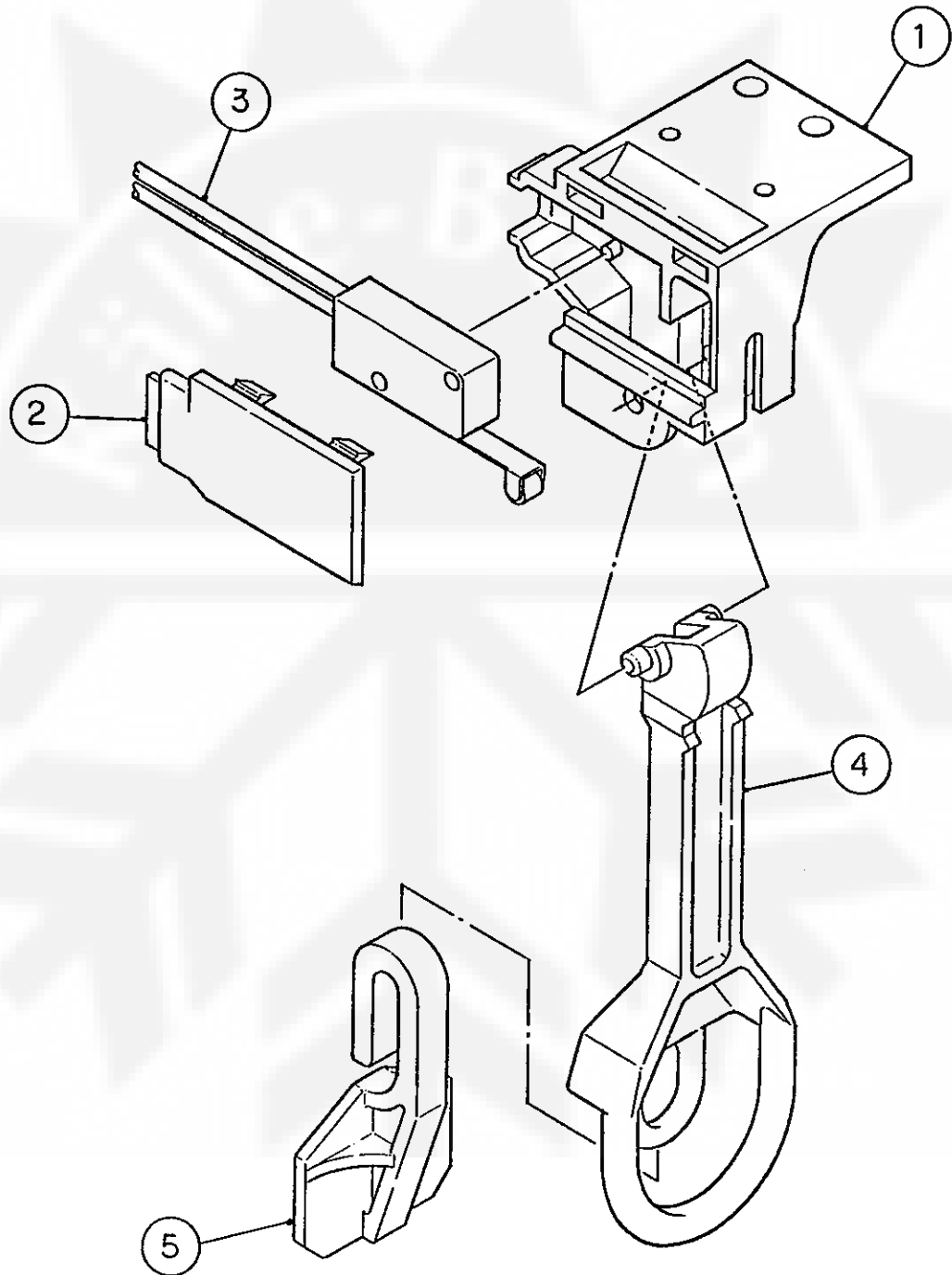












(E-0) (E-1) and later
(C-1) (D-0) (D-1) (D-2)
(A-05)(A-1) (B-0) (C-0)
(J-1) (K-0) (K-1) (K-2)

IM-21CLE

L. ACCESSORIES

